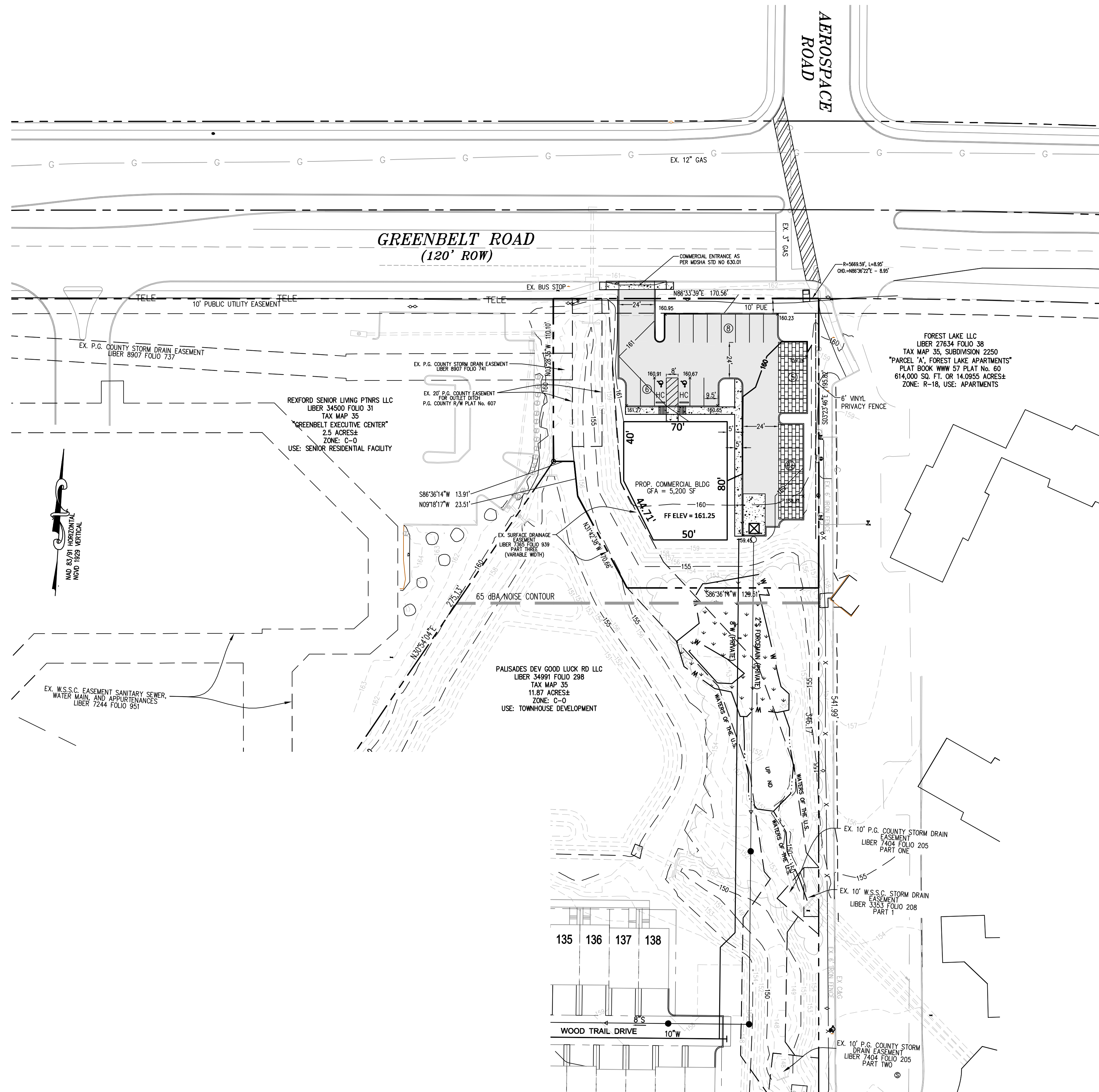


LEGEND:

- 60 — MAJOR CONTOUR
- 58 — MINOR CONTOUR
- — — EXISTING TREE LINE
- — — PROPERTY LINE
- — — ADJOINING PROPERTY LINE
- — — FENCE
- ▭ PROP. BUILDING
- — — PROP. CURB & GUTTER
- OHE — OVERHEAD ELECTRIC LINE
- ELECTRIC POLE

- — — SEWER LINE
- ⊙ SEWER MANHOLE
- — — WATER LINE
- WATER VALVE
- ⊕ WATER METER
- ⊕ FIRE HYDRANT
- G — GAS LINE
- ⊕ GAS VALVE
- W WETLAND



PARKING TABULATION

LOT AREA:	0.75 ACRES
COMMERCIAL USE:	5,200 SF
PARKING SPACES REQUIRED:	
COMMERCIAL/RETAIL/SERVICE:	31
MEDICAL OFFICE:	26
PARKING SPACES PROVIDED:	
STANDARD (9.5x19')	19
COMPACT (8x16.5')	8
TOTAL:	27
HC SPACES REQUIRED:	2 (INC. 1 VAN SPACE)
HC SPACES PROVIDED:	2 (INC. 1 VAN SPACE)

THIS BLOCK IS FOR OFFICIAL USE ONLY

QR label certifies that this plan meets conditions of final approval by the Planning Board, its designee or the District Council.

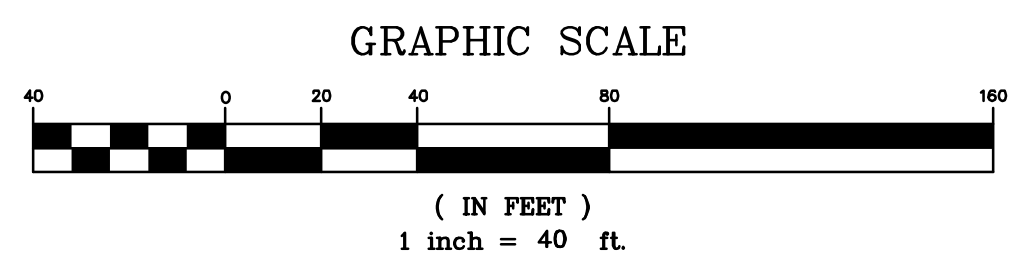
M-NCPPC APPROVAL

PROJECT NAME: WOOD GLEN COMMERCIAL

PROJECT NUMBER: PRELIMINARY PLAN 4-14021

For Conditions of Approval see Site Plan Cover Sheet or Approval Sheet
Revision numbers must be included in the Project Number

PRELIMINARY PLAN 4-14021



OWNER/APPLICANT

PALISADES DEVELOPMENT AT GOOD LUCK ROAD, LLC
 13501 CAVANAUGH DRIVE
 ROCKVILLE, MARYLAND 20850
 PHONE: 301-461-7528

Rev. No.	Revision	Rev. Date

ENGINEER

AB CONSULTANTS, INC.
 9450 ANNAPOLIS ROAD
 LANHAM, MARYLAND 20706
 PHONE: (301) 306-3091
 FAX: (301) 306-3092
 CONTACT: SANJAY PATEL PHONE: 301-306-3091 x121

PROJECT

WOOD GLEN COMMERCIAL
CONCEPTUAL SITE PLAN
 14th ELECTION DISTRICT
 PRINCE GEORGE'S COUNTY, MARYLAND
 TAX MAP 35, GRID F2, OUTPARCEL A

PROJECT NO.

2013015
 SCALE: 1"=30'
 DATE: 1/28/15
 DRAWN BY: CG
 CHECKED BY: SP
 SHEET: 2 OF 2