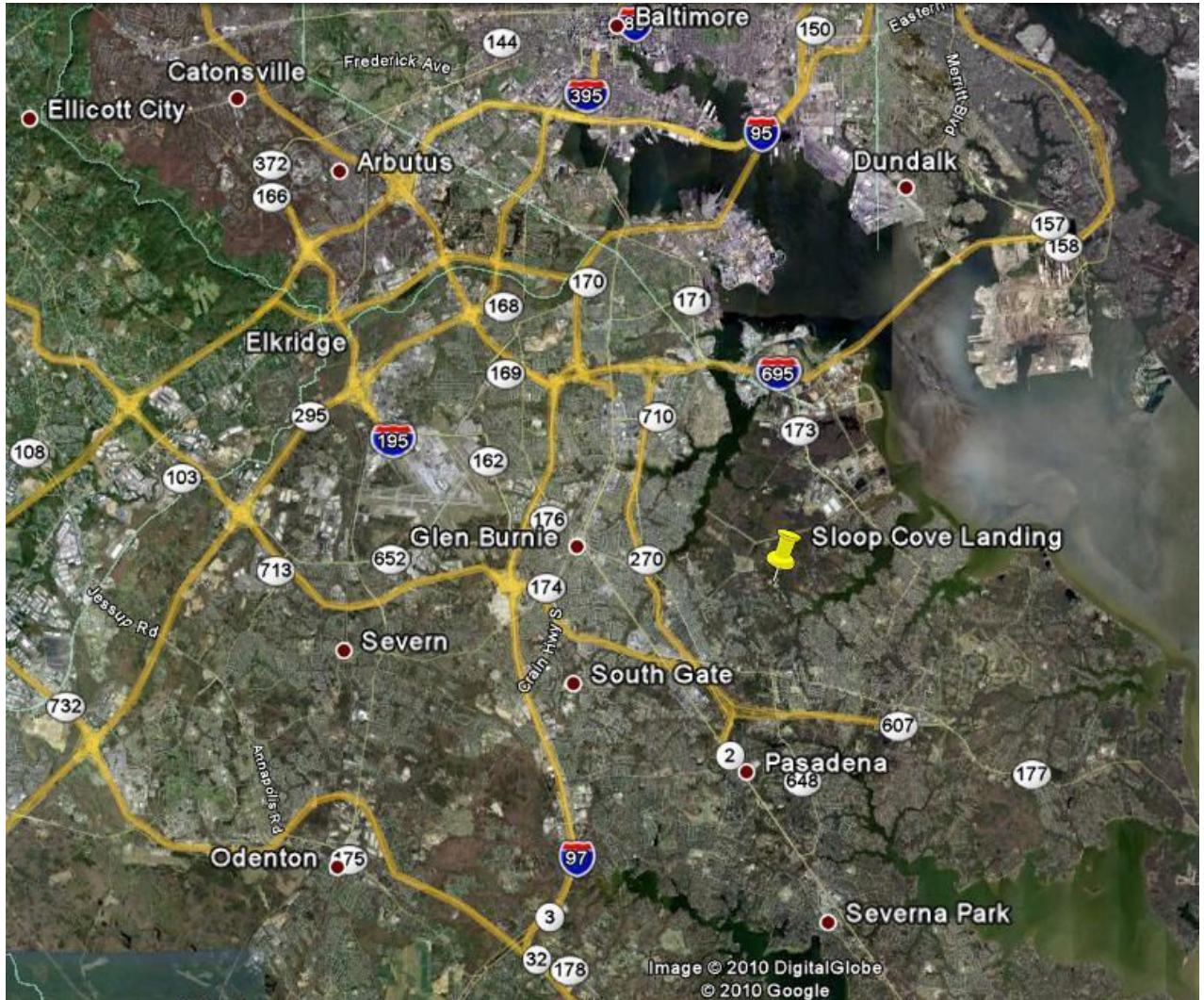


Development • Investment • Consulting • Brokerage

SLOOP COVE LANDING

NORTH SHORE DRIVE, GLEN BURNIE, ANNE ARUNDEL COUNTY 21060



15 finished lots available in an established active adult community located in desirable Northern Anne Arundel County.

Sloop Cove Landing

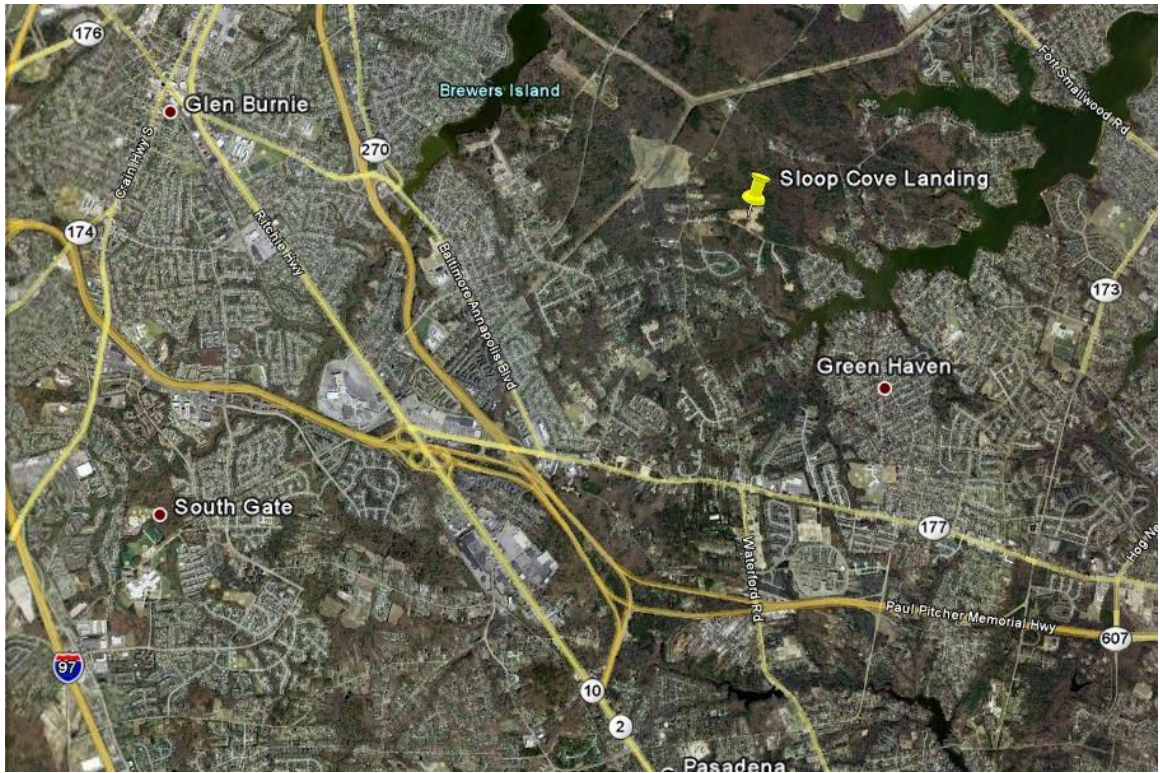


- Availability:** 15 finished single family age restricted lots
- Community:** Community contains a total of 71 single family residential units in two phases split by North Shore Drive. Since 2006, Section 1 has been completely sold out. To date, K Hovnanian Homes has built 21 of the 37 homes in Section 2 and exited the project in late 2008.
- Utilities:** Public water and sewer
- Engineer:** DFI, Inc.
- Tax Map:** Anne Arundel Tax Map 10,
- Directions:** Route 100 East to MD 177 (Mountain Road). Left on Solley Road and Right on North Shore Drive. Sloop Cove Landing will be on your left on Schooner Cove Road.
- Contact:** Kevin Setzer
 (410) 266-5100 ext. 36
 Ksetzer@hogancompanies.com

Lot #	Street Address	Lot SF
1	7942 Schooner Cove Road	27,030
3	811 Windjammer Road	20,064
4	809 Windjammer Road	15,123
5	807 Windjammer Road	15,012
7	803 Windjammer Road	15,040
8	801 Windjammer Road	15,990
11	804 Windjammer Road	15,047
12	806 Windjammer Road	11,815
13	808 Windjammer Road	12,065
15	812 Windjammer Road	13,178
23	7937 Schooner Cove Road	27,235
24	900 Night Breeze Court	24,945
26	905 Night Breeze Court	25,563
27	903 Night Breeze Court	21,997
28	901 Night Breeze Court	21,001

Integrity • Experience • Results

Development • Investment • Consulting • Brokerage



Integrity • Experience • Results

All information is from sources deemed reliable, but not guaranteed by Hogan Companies, LLC or its agents. Package is subject to price changes, errors, omissions, corrections, prior sales or withdrawal.

Development • Investment • Consulting • Brokerage

Community Pictures



Integrity • Experience • Results

All information is from sources deemed reliable, but not guaranteed by Hogan Companies, LLC or its agents. Package is subject to price changes, errors, omissions, corrections, prior sales or withdrawal.