

Development • Investment • Consulting • Brokerage

PORTER ROAD SUBDIVISION

PORTER ROAD (ROUTE 625), SOUTH OF CONSTITUTION HWY (ROUTE 20)
 ORANGE, VIRGINIA 22960



5 lots located off Porter Road with easy access to Route 20. Bring your builder or use ours.
 Owner will sell individual lots or in bulk

Lot	Acreage	Price
Lot 3 - 46-3E	3.159	\$57,500
Lot 5 - 46-3G	3.064	\$57,500
Lot 7 - 46-3J	4.482	\$57,500
Lot 8 - 46-3K	3.052	\$57,500
Lot A - 46-3B	2.53	\$62,000

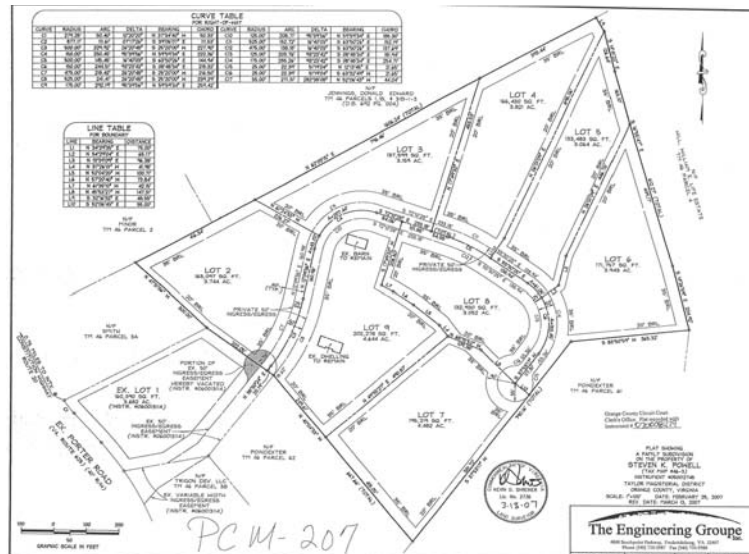
Contact Kevin Setzer at (410) 266-5100 ext. 36
 Ksetzer@hogancompanies.com

For GPS: Subdivision located prior to 12211 Porter Road, Orange, VA 22960

2661 Riva Road, Suite 300 Annapolis, Maryland 21401
 Office: (410) 266-5100 Toll Free: (866) 22-HOGAN Fax: (410) 266-9432
 www.hogancompanies.com

Development • Investment • Consulting • Brokerage

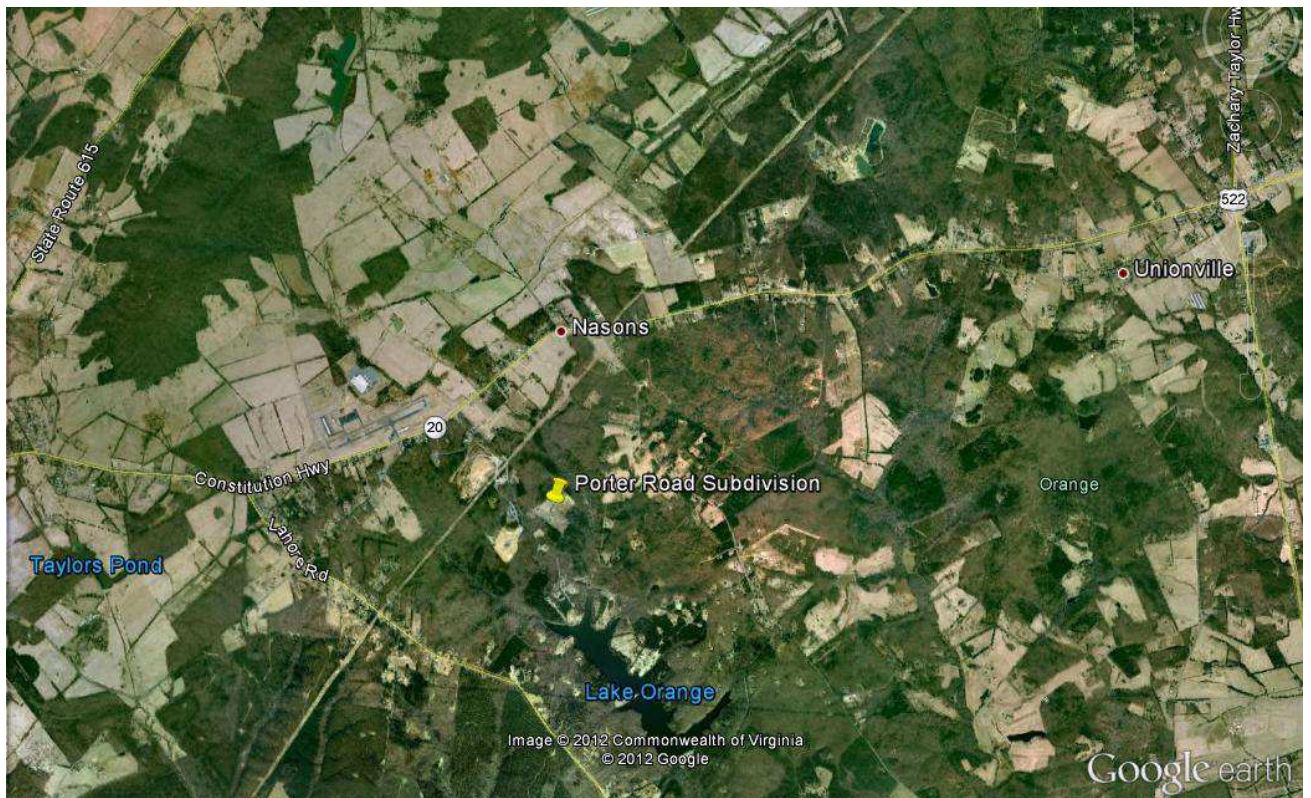
Site Pictures



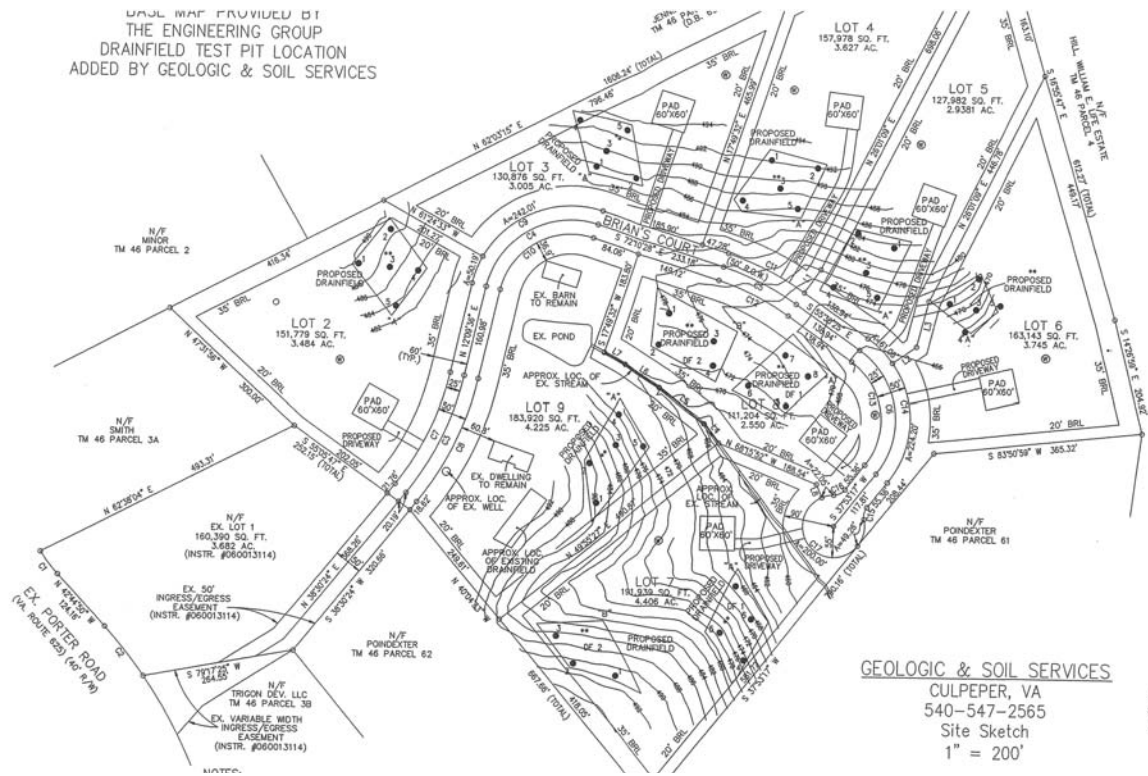
Integrity • Experience • Results

All information is from sources deemed reliable, but not guaranteed by Hogan Companies, LLC or its agents. Package is subject to price changes, errors, omissions, corrections, prior sales or withdrawal.

Development • Investment • Consulting • Brokerage



BASE MAP PROVIDED BY
THE ENGINEERING GROUP
DRAINFIELD TEST PIT LOCATION
ADDED BY GEOLOGIC & SOIL SERVICES



GEOLOGIC & SOIL SERVICES
CULPEPER, VA
540-547-2565
Site Sketch
1" = 200'



Integrity • Experience • Results

All information is from sources deemed reliable, but not guaranteed by Hogan Companies, LLC or its agents.
Package is subject to price changes, errors, omissions, corrections, prior sales or withdrawal.